

0 Remington Ct 15 Shelbyville

Nice buildable lot near Gun Lake

PROPERTY DETAILS



Listing Price: **\$19,000**

Listing 0 Remington Ct 15

Address: Shelbyville MI 49344

Full Baths: 0

Partial Baths: 0

QR Code:

On a SmartPhone?
Scan the QR code
to see this listing



PROPERTY DESCRIPTION

Wayland Schools, choose from several large lots approximately .75 to 1 Acre. Open views, lots of room, daylight and walkout sites available. There is a centrally located private park in the development and all lots are within walking and biking distance to Gun Lake County Park & Boat Access, Shopping, and Grocery. Landscaped entry, paved streets, cul-de-sac's, Improved utilities include City Sewer, Electric, Natural gas, Cable, and telephone. Wells are already located on Lots 2, 7, & 14. Annual dues for Common area maintenance of Snow Plowing and Street lights divided among sites approx \$120/yr. Building restrictions of 1500 square feet for a ranch, 1800 square feet for a 2 story. Out buildings allowed. Your builder or ours. Land contract terms. Easy access to US-131 & Gun Lake.

CONTACT INFORMATION



Mark Brace, Realtor, ABR, GRI, SRES, e-PRO, AHWD,

Prudential Preferred REALTOR® #174;
markbrace.com

3000 East Beltline NE

Grand Rapids 49525

Direct: (616) 447-7025

(616) 447-7025

markb@grar.com

Mark Brace, REALTOR®, ABR, GRI, SRES, e-pro, AHWD

Prudential Preferred REALTOR®

Grand Rapids Office 3000 Beltline NE Grand Rapids, MI 49525

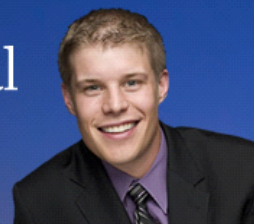
Office: (616) 364-9551 Ext: 18125 Cell: (616) 540-7705 Direct: (616) 447-7025

markb@grar.com



Prudential

**Preferred
REALTOR®**



Equal Housing Opportunity

Property information deemed reliable but not guaranteed and should be verified.

Copyright © 2003-2012 Real Pro Systems LLC. All rights reserved.