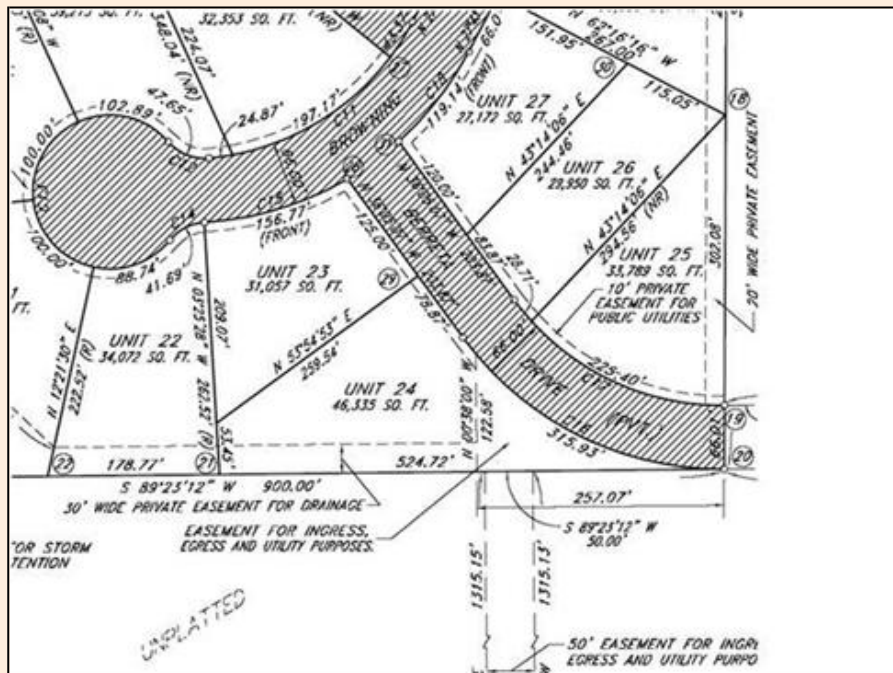


0 Berreta Dr 24 Shelbyville Property

PROPERTY DETAILS



Listing Price: \$16,500

Listing Address: 0 Berreta Dr 24

Shelbyville MI 49344

Full Baths: 0

Partial Baths: 0

Lot Size: 0.023

QR Code:

On a SmartPhone?
Scan the QR code
to see this listing



PROPERTY DESCRIPTION

Wayland Schools, Choose From Several Large Lots Approximately .75 To 1 Acre. Open Views, Lots Of Room, Daylight And Walkout Sites Available. There Is A Centrally Located Private Park In The Development And All Lots Are Within Walking And Biking Distance To Gun Lake County Park & Boat Access, Shopping, And Grocery. Landscaped Entry, Paved Streets, Cul-de-sac's, Improved Utilities Include City Sewer, Electric, Natural Gas, Cable, And Telephone. Wells Are Already Located On Lots 2, 7, & 14. Annual Dues For Common Area Maintenance Of Snow Plowing And Street Lights Divided Among Sites Approx \$120/Yr. Building Restrictions Of 1500 Square Feet For A Ranch, 1800 Square Feet For A 2 Story. Out Buildings Allowed. Your Builder Or Ours. Land Contract Terms. Easy Access To Us-131 & Gun Lake.

CONTACT INFORMATION



Mark Brace, Realtor, ABR, GRI, SRES, e-PRO, AHWD,

Prudential Preferred REALTOR®;
markbrace.com

3000 East Beltline NE

Grand Rapids 49525

Direct: (616) 447-7025

(616) 447-7025

markb@grar.com

Mark Brace, REALTOR®, ABR, GRI, SRES, e-pro, AHWD



Prudential

Prudential Preferred REALTOR®

Grand Rapids Office* 3000 Beltline NE Grand Rapids, MI 49525

Office: (616) 364-9551 Ext: 18125 Cell: (616) 540-7705 Direct: (616) 447-7025

markb@grar.com

Preferred REALTOR®



Equal Housing Opportunity

Property information deemed reliable but not guaranteed and should be verified.

Copyright © 2003-2012 Real Pro Systems LLC. All rights reserved.